



Discovering Greenland (January 13, 2026)

TEACHING GUIDE

i What? Greenland, this vast territory belonging to Denmark, which the United States would very much like to add to its territory.

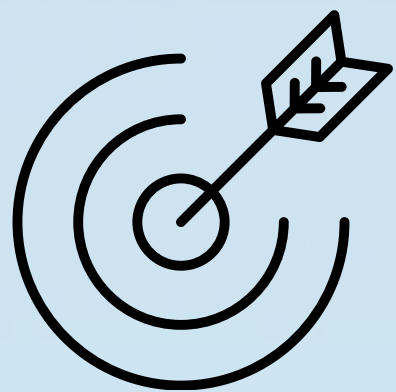
u Who? The American president, Donald Trump, but above all, the approximately 57,000 Greenlanders who live on the island.

g Where? In Greenland, which is located in the North Atlantic and Arctic Oceans.

a When? Greenland was in the news a lot last week.

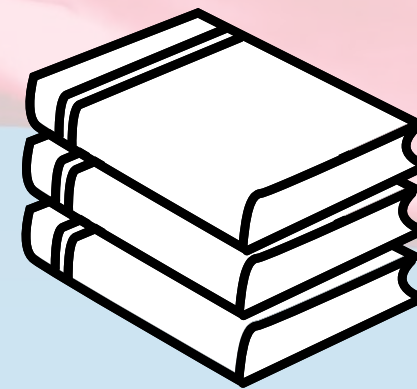
? Why is this important? Because Greenland plays a key role in climate, natural resources, and understanding the major global issues.

🎯 For this activity, your goal will be to learn a little more about Greenland.



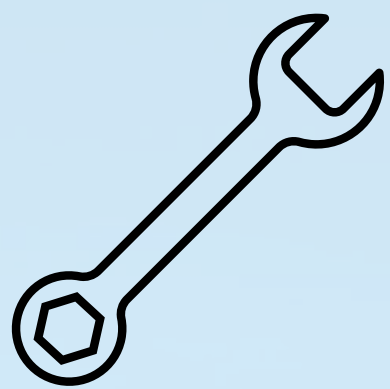
OBJECTIVES

- Locate Greenland on a world map.
- Identify its main geographical features.
- Compare the size of Greenland to that of other large islands.
- Use a map and a scale to estimate distances.
- Understand why Greenland's location is strategic.



SUBJECTS

- **Social Studies**
 - World geography
 - Map reading
 - Territorial issues
- **Mathematics**
 - Measuring distances
 - Estimating distances using a scale
- **English**
 - Reading short texts
 - Information comprehension



COMPETENCIES

- Read and interpret geographical maps
- Search for and select relevant information
- Compare territories on a global scale
- Justify an answer using observed data
- Develop critical thinking on current issues



DURATION

- About 60 minutes

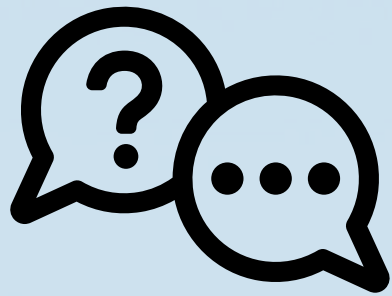


GETTING STARTED

- Observe the activity title.
- Locate Greenland on a world map.
- Discuss briefly:
 - Have you ever heard of Greenland?
 - Where do you think it is located?
 - What does this territory look like?

Discovering Greenland (January 13, 2026)

TEACHING GUIDE



QUESTIONS AND ANSWERS

STEP 1 — An island to discover. Watching of videos and consultation of reliable sources to locate Greenland and describe its territory.

Q1 — In the Northern Hemisphere

Q2 — In Denmark

Q3 — It is a vast territory covered in ice

STEP 2 — An island of incredible dimensions. Research of information on Wikipedia or Vikidia and completion of a comparative table of the five largest islands in the world.

Expected answers:

Greenland — 2,130,800 km² — Denmark

New Guinea — 821,400 km² — Indonesia and Papua New Guinea

Borneo — 748,200 km² — Indonesia, Malaysia, and Brunei

Madagascar — 587,000 km² — Madagascar

Baffin Island — 507,000 km² — Canada

STEP 3 — An island, a crossroads. Measurement of distances using a polar map.

Q4 — Distance Greenland to North Pole: approximately 800 km

Q5 — Distance Greenland to the United States: approximately 2,700 km

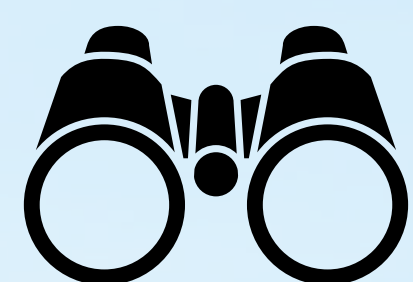
Q6 — Distance Greenland to Denmark: approximately 3,000 km

Q7 — Distance Greenland to Russia: approximately 3,700 km



WRAPPING UP

- Write down three important facts you have learned about Greenland.
- True or false. Indicate whether the following statements are true or false:
 - Greenland is a continent.
 - Greenland is part of Denmark.
 - Greenland is located near the North Pole.
- One word to sum it up
 - Choose one word to describe Greenland (e.g., cold, vast) and explain your choice in one sentence.



FURTHER EXPLORATION

 Globe Trottin' Kids. *Greenland*.

<https://www.globetrottinkids.com/countries/greenland>





Discovering Greenland (January 13, 2026)

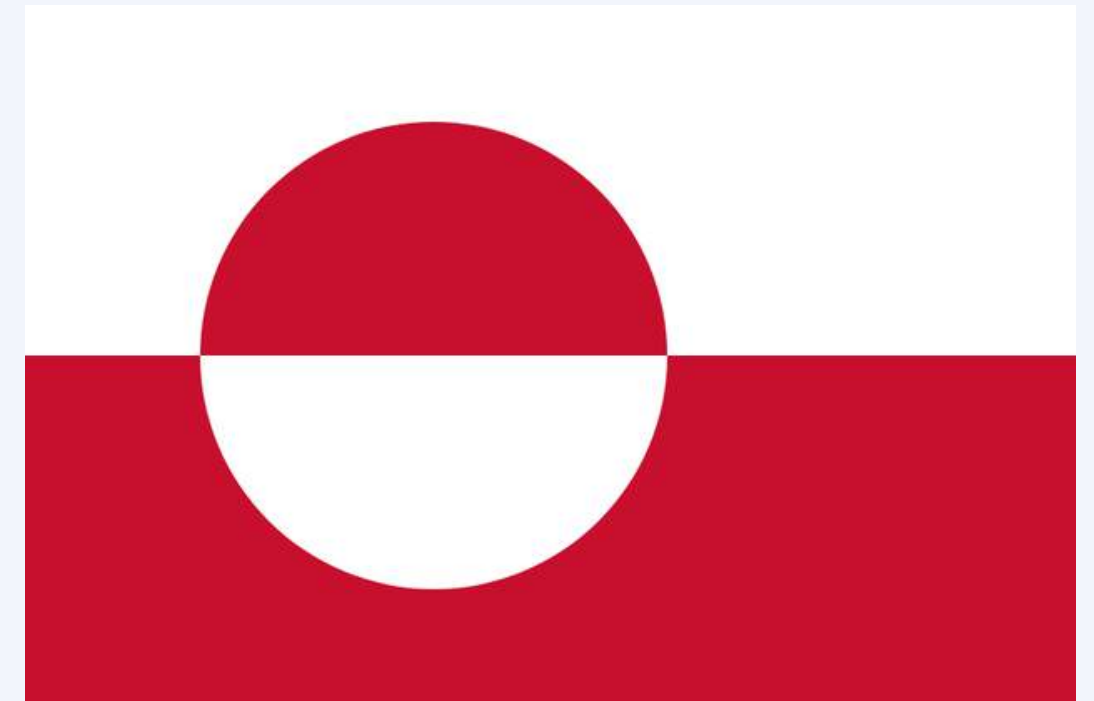


The Flag of Greenland

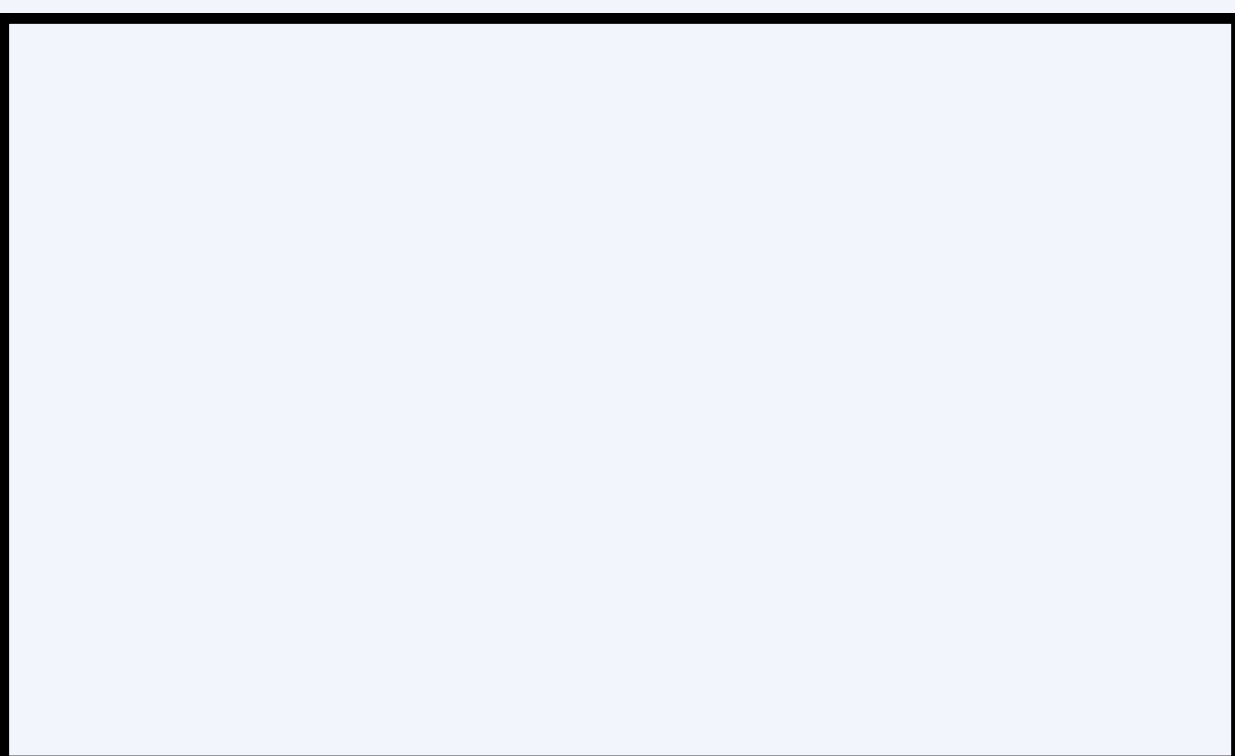
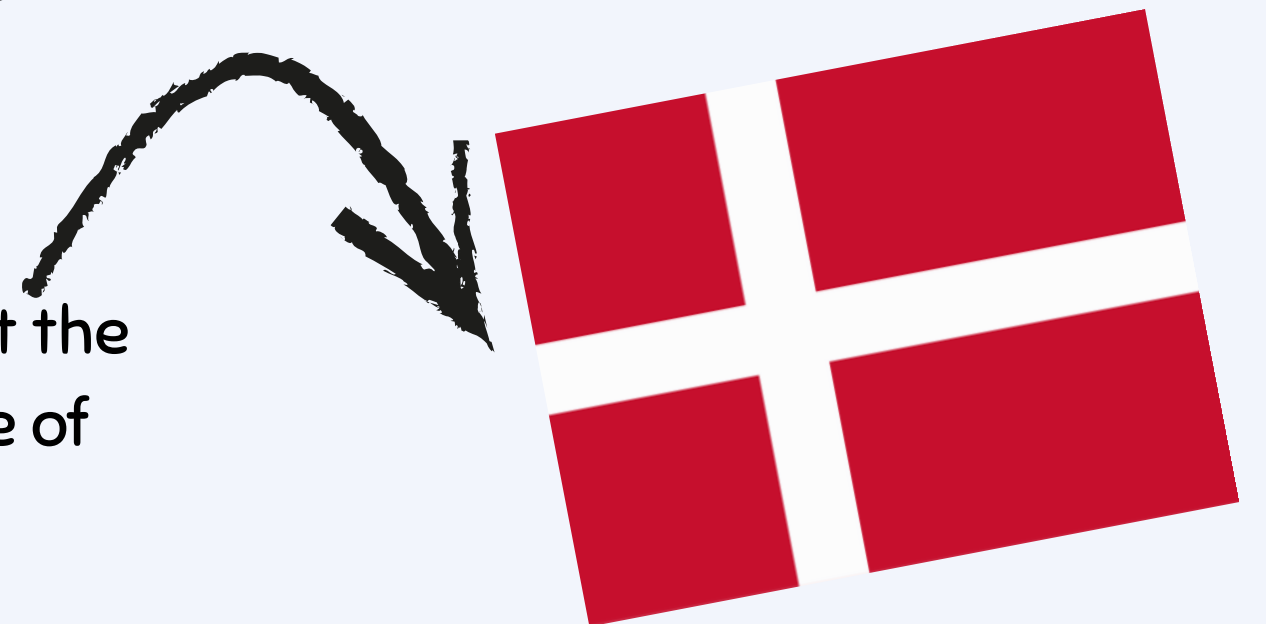
This is the flag of Greenland! It was designed by Greenlandic artist Thue Christiansen. It was officially adopted on June 21, 1985, the summer solstice, the moment when the midnight sun is at its highest point.

What does it represent?

- White stripe (top): represents the ice cap and icebergs, which cover more than 80% of the territory.
- Red stripe (bottom): symbolizes the ocean surrounding the island.
- Red half-disc: illustrates the sun, its lower part appearing to plunge into the sea—a powerful image in a country marked by the polar night and the dramatic return of daylight.
- White half-disc: evokes the floating ice and pack ice.



The red and white colors recall the historical link with Denmark, but the absence of the Nordic cross affirms a distinct identity and a degree of political autonomy.



Now you know a lot more about Greenland! If you were asked to imagine a flag for this large island, what would you think of? Draw your version of the Greenland flag, and explain what it means!

My version of the Greenland flag:

Some Facts About Greenland

- Greenland is more than 80% covered in ice, and this immense ice sheet is one of the largest freshwater reserves on the planet.
- In some regions, the sun doesn't set for several weeks in summer, a phenomenon known as the midnight sun.
- Despite its vast size, Greenland has fewer than 60,000 inhabitants, making it one of the least populated territories in the world.